

# SerialMagic

Magically Connecting Serial Data To Applications

## Bluetooth Connection Notes for Mac OS X 10.2 - 10.3

**Insure the target machine is running OS X 10.2.8 or later. If not, run OS X "Software Update..." to get the latest OS X version.**

Bluetooth adaptor note. When using a Mac without built-in Bluetooth, you will need a Bluetooth USB adaptor, (SerialMagic Pro also supports using a Bluetooth Access Point - BTAP). At the time of this writing, the only Apple approved Bluetooth adaptor is the D-Link DBT-120. The DBT-120 module **MUST** be hardware revision 3 or later. Check the back of the module for revision information.

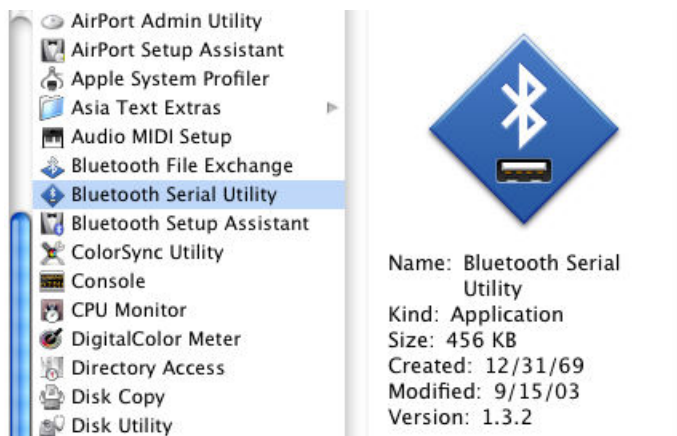
OS X provides two utilities that are used for Bluetooth connection management. The "Bluetooth Serial Utility", and the "Bluetooth Setup Assistant".

This document will outline the steps to use the LaserChamp(tm) and Flic Bluetooth barcode scanners, however these instructions are similar for virtually any Bluetooth device that uses the Bluetooth Serial Port Protocol (Spp).

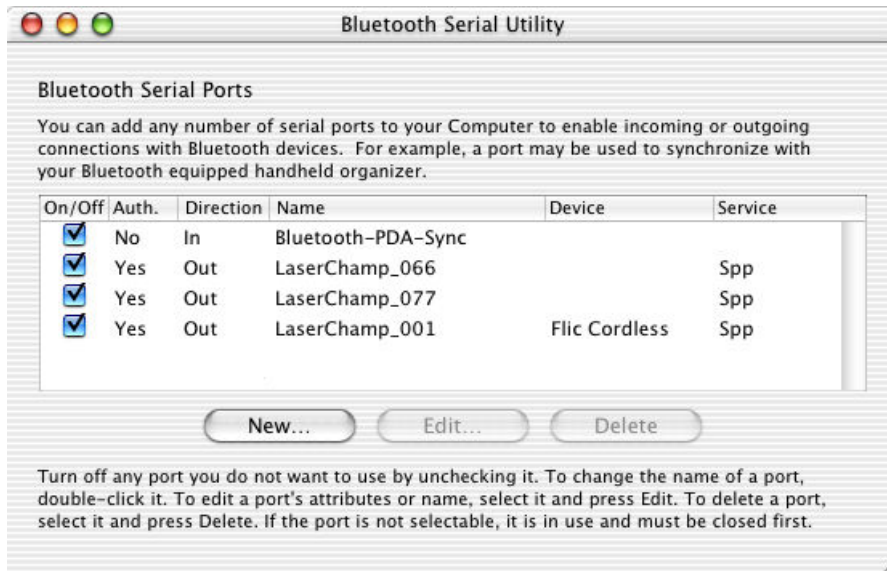
**When using the LaserChamp or Flic scanner, the Bluetooth Serial Utility should be run first.** If the Bluetooth Setup Assistant is run first to pair the scanner, it may not work as expected. First run Bluetooth Serial Utility then run the Bluetooth Setup Assistant.

## Bluetooth Serial Utility

1) Run "Bluetooth Serial Utility"



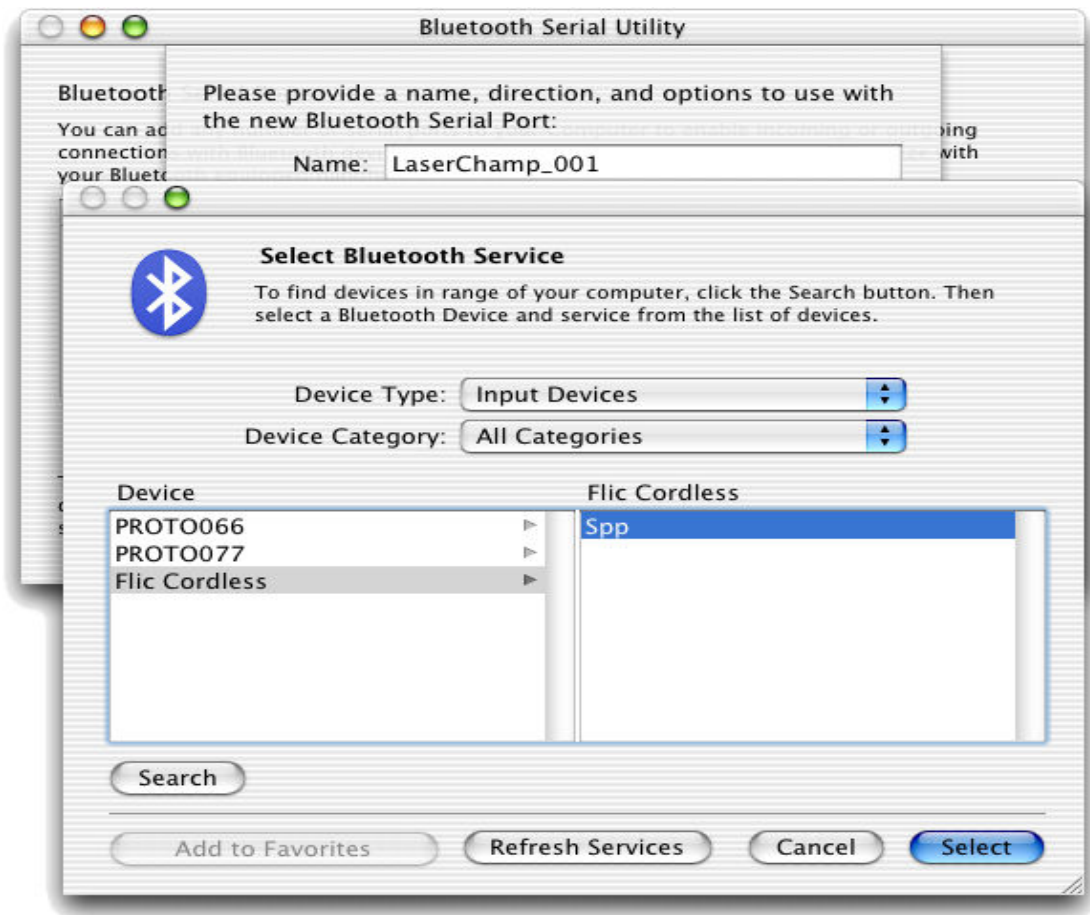
2) Click "New" to create a new Bluetooth connection. The image below shows how the connection built by these instructions will appear *after* the connection has been setup.



2) Provide a name for the Bluetooth connection to the device, select "Outgoing", and "Port Type: RS-232". If the device requires authentication, check the "Require Authentication". By default the LaserChamp requires Authentication.

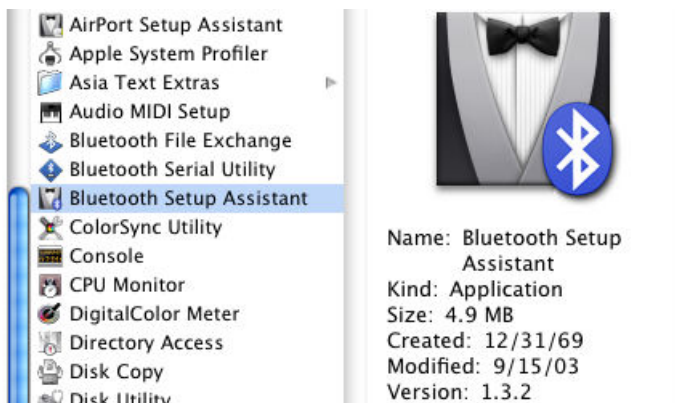


3) Select the Bluetooth Spp service for the device, and choose "Select". If there are many devices listed, you can clarify the view to show only active devices by choosing "Discovered Devices" from the "Device Category" list.



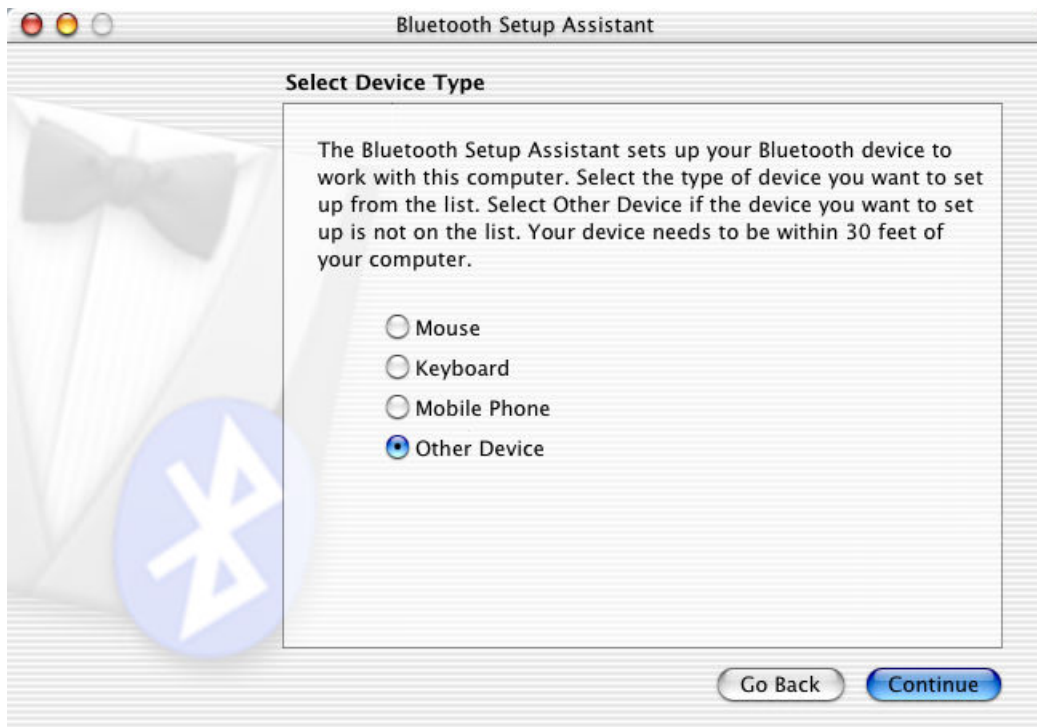
## Bluetooth Setup Assistant

1) **Be sure the Bluetooth device has been configured using the Bluetooth Serial Utility as discussed above**, then run "Bluetooth Setup Assistant".

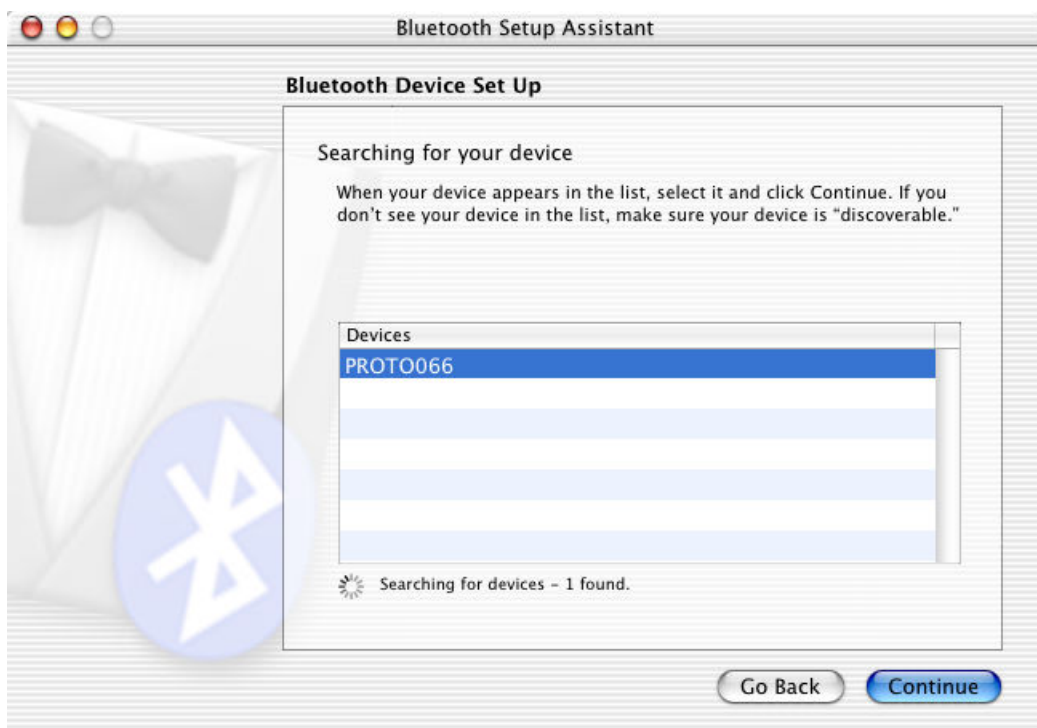


2) Click "Continue" at the welcome dialog.

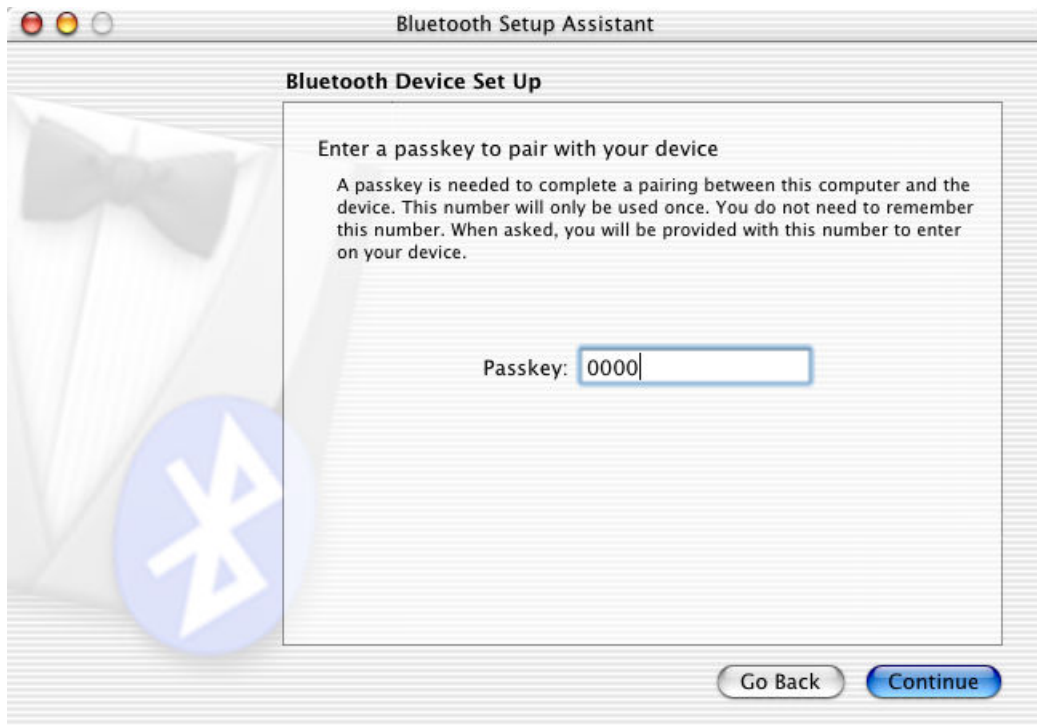
3) At the "Select Device Type" dialog, choose "Other Device" and click "Continue".



4) Activate the Bluetooth device, and at the "Bluetooth Device Set Up" dialog, choose the device, and click "Continue".

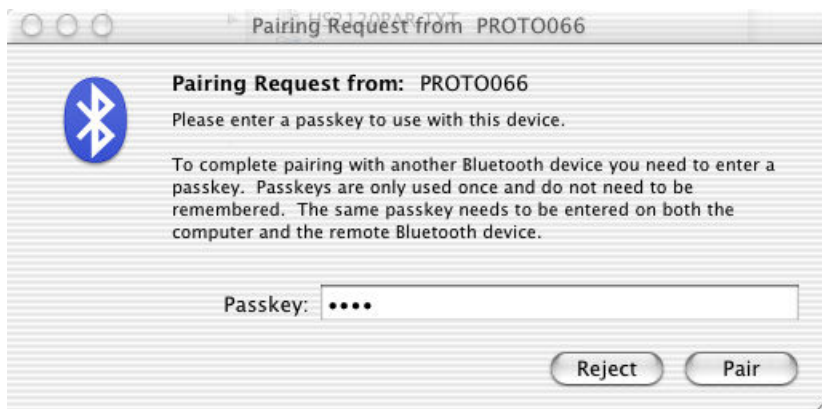


5) Enter the passkey for the device, and click "Continue".



You can then dismiss the "Conclusion" dialog by clicking "Quit", and the device can be used with SerialMagic.

Note: When the Bluetooth device pairing is changed, the "Pairing Request" dialog shown below will occur when SerialMagic attempts to establish a Bluetooth connection to the device. Pairing is typically 'lost' when the device is paired with another computer, or when the Bluetooth adaptor is removed from the computer when Bluetooth is not built-in.



### **Contact US**

If you have questions or comments please contact us.

**Serialio.com**

**support@serialio.com**