

SerialMagic Professional OS X

Connecting Serial Data To Applications

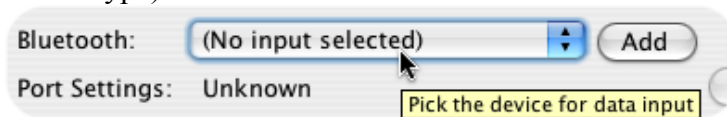
Quick Start

1. Start the application that will be receiving the Bluetooth or serial port data.
2. Start the SerialMagic application.
3. Select the input device *type* from the “Device:” list (e.g. “LaserChamp Bluetooth”)



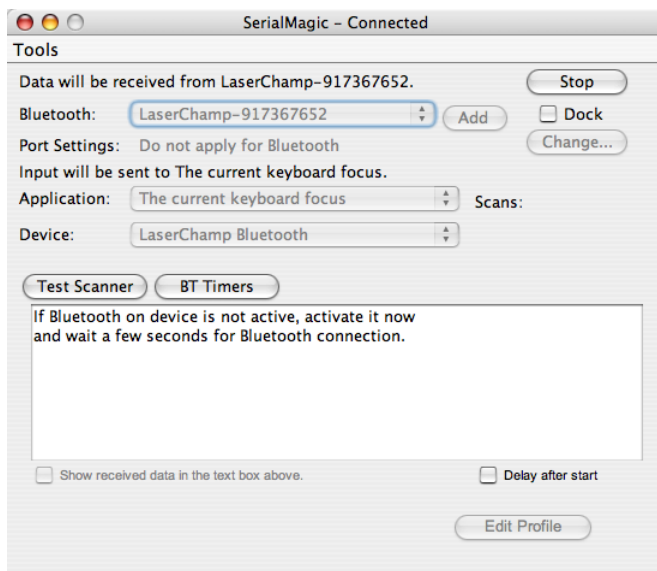
See devices section for more notes on devices.

4. Select the input device *name* from the “Bluetooth:” or “Serial Port:” list (depending on device type)



This may be a Bluetooth device, USB-RS232 adaptor, or if using an XServe a built-in RS232 serial port. To Add a Bluetooth device see the “Add Bluetooth Device” documentation.

5. Click on Start.
6. Click in your target application where data is desired. The cursor is flashing at the point where the data will be entered.
7. Start collecting data from the input device.



This image below shows SerialMagic actively connected to a Bluetooth scanner with “The current keyboard focus” as the target application.

This means that the scan data is placed at the cursor location of the current application where the cursor is located.

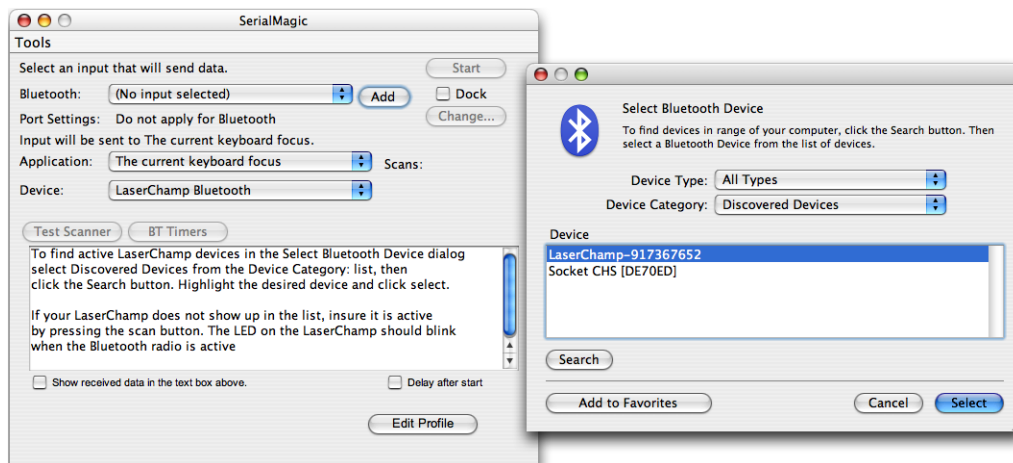
Add Bluetooth Device

SerialMagic allows you to add Bluetooth devices using the Add button next to the Bluetooth: device name list.

Note: The Socket CHS 7 scanner must be added using the OS X Bluetooth app in System Preferences. Please see the document titled “ReadMe-Bluetooth-OSX-Tiger.pdf”. Please note the default passkey for the CHS 7 scanner is 1234.

Activate the Bluetooth device you wish to connect to. If you are using a LaserChamp scanner then press the scan button. The LED on the scanner will blink 2 quick times per second to indicate the Bluetooth radio is active, and one time per second to indicate an active Bluetooth connection.

Click on the Add button, and the Select Bluetooth Device dialog will be displayed. Select Discovered Devices from the Device Category: drop-down, then click the Search button to see active Bluetooth devices as shown below.



Highlight the desired device and click select to add the device to the SerialMagic list. If the device is not currently paired with the OS X machine, you will be prompted for a passkey. Enter the appropriate passkey for your device. **The default passkey for LaserChamp scanners is 0000.**

Note: the default Apple keyboard and mouse devices will not be shown even when they are active, since they cannot be connected using SerialMagic. Please contact Serialio.com if you have needs to customize SerialMagic for specific devices.

Devices

The devices list allows selection of different device types.

LaserChamp Bluetooth

Choose this for LaserChamp* scanners.

LaserChamp Roaming Use

Choose this for LaserChamp* scanners when roaming away from the Mac to scan data into scanner memory, then downloading scans when connecting to the Mac. When this option is selected, the LaserChamp will need to be configured in ‘handshake secure’ mode. This will insure scanned data gets to SerialMagic before it is removed from LaserChamp memory.

Note: this mode can also be used when the scanner is connected to the Mac with a cable. In this mode if there is an error sending the data from the LaserChamp to the Mac, the scan data will be saved in LaserChamp memory until it can be successfully sent to the Mac.

Note: The scanner MUST have configured for this feature to work. The scanner will be properly configured after making a selection when the “Test Scanner” button is used.

LaserChamp Cabled Use

Choose this for LaserChamp* scanners when scanning data while connected to the computer with a cable. Data will not be stored in LaserChamp memory when the LaserChamp has been configured in this mode.

Other Serial Device

Choose this for RS-232 serial devices other than LaserChamp* scanners. When this mode is selected serial port parameters can be configured in SerialMagic.

*LaserChamp scanners (and Flic scanners with proper firmware version, SerialMagic will report firmware version when scanner is configured)

Main Dialog

Dock

Minimize SerialMagic to the OS X Dock on start.

Show received data in the text box above

Shows data received. Can be helpful for setup of non-standard devices.

Delay after start

If a target application is selected, SerialMagic will provide focus to that application when it starts. Sometimes it may be desired to manually provide focus to the target application. This option will provide a short delay before processing data to allow the user to manually provide focus to the target application.

Scans Counter

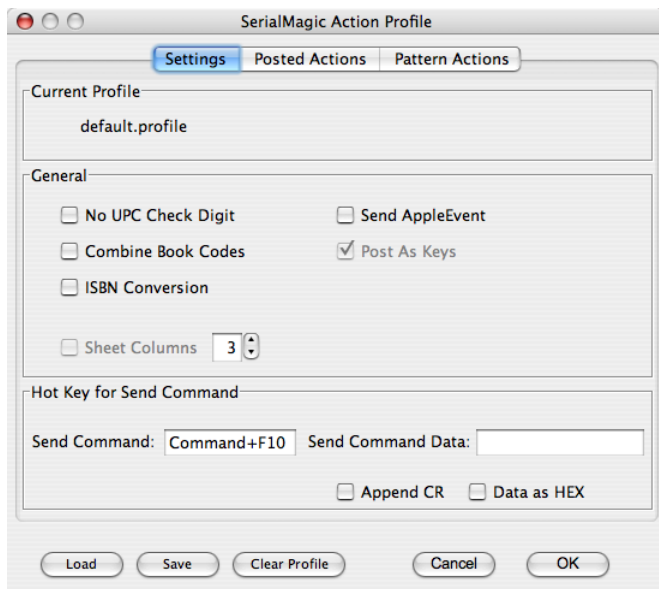
Counter showing number of scans (data packets) received by SerialMagic.

Add Button

Use to setup (perform Bluetooth pairing) between Mac and LaserChamp or Flic Bluetooth laser barcode scanner.

SerialMagic Action Profiles (SMAPs)

SerialMagic provides advanced features by using a SerialMagic Action Profile or SMAP. Here you can have SerialMagic provide macro like functions with each barcode or RFID scan. The SMAPs are defined using the “Edit Profile” button from the SerialMagic main dialog.



SMAP Settings Dialog

No UPC Check Digit (only applies to LaserChamp & Flic scanners)

Option for LaserChamp scanner for used with applications that don't want to see UPC check digit. **Note: The scanner MUST have "NCR Identifiers" Enabled for this feature to work.** The scanner will be properly configured after making a selection when the “Test Scanner” button is used.

Combine Book codes (only applies to LaserChamp & Flic scanners)

Option for LaserChamp scanner for used with applications that use ISBN codes, and want to have the entire code sent together. **Note: The scanner MUST have configured for this feature to work.** The scanner will be properly configured after making a selection when the “Test Scanner” button is used.

ISBN Conversion

Converts Bookland (EAN-13) barcodes to 10 digit ISBN numbers before posting data. This option requires the scanner to be configured before it will work properly.

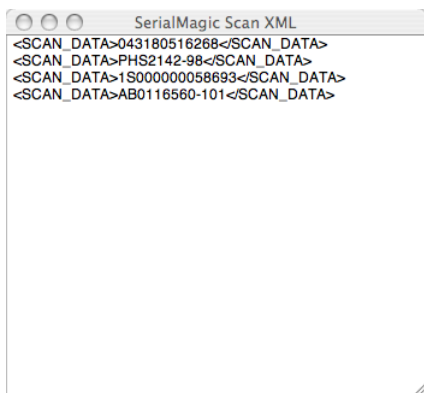
Post As Keys

This is how SerialMagic works by default. Data is posted to target application as if data were typed on the keyboard (...by a user that is very fast ... and never makes mistakes)

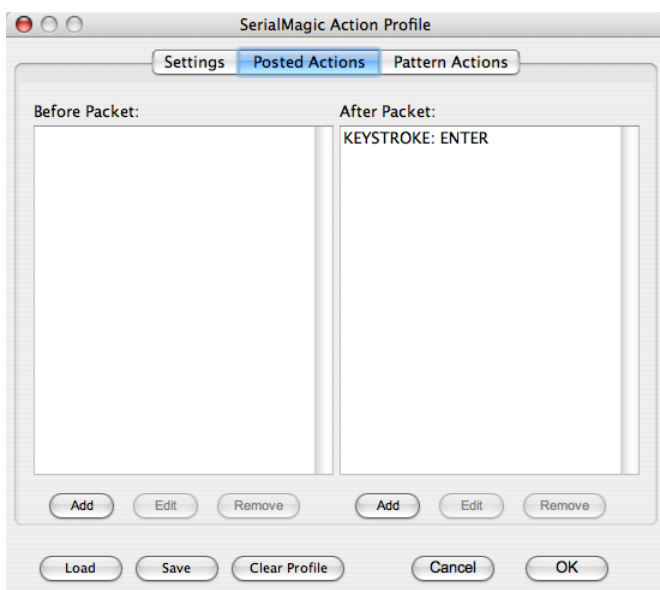
Send AppleEvent

Sometimes it may be desired to interface with SerialMagic by a method other than sending data as keystrokes to an application. SerialMagic Professional for OS X supports sending data to an application as an Apple Event. This option is used to enable that feature. SerialMagic can send data as an Apple Event AND as keystrokes if desired. Data is sent in a very lightweight XML format.

Serialio.com provides an example Cocoa application that can be used to demonstrate this feature. The image below shows SerialMagic sending barcodes as Apple Events to an example application.



SMAP Posted Actions Dialog

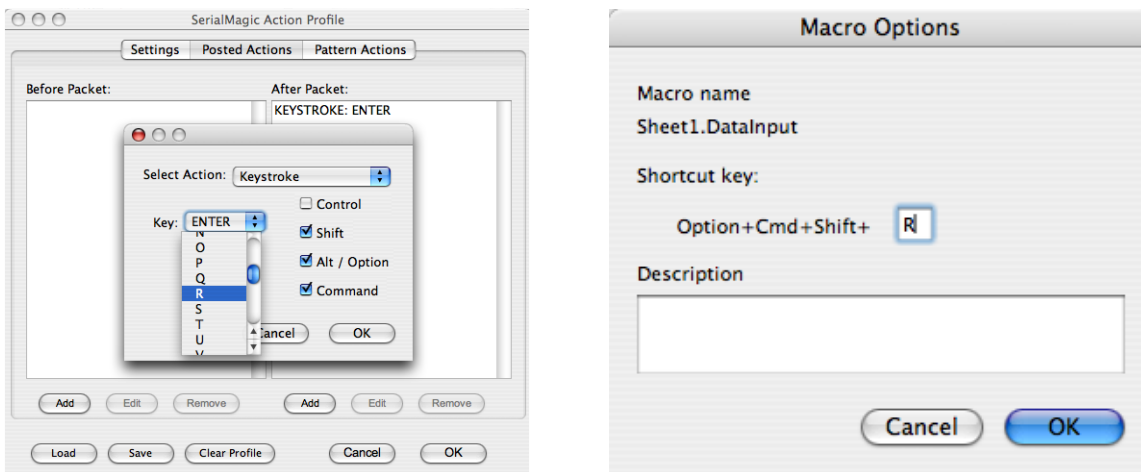


Before Packet

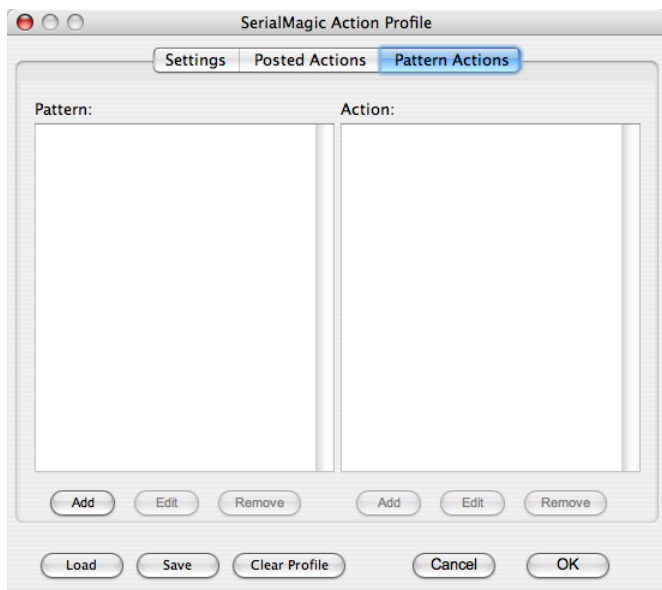
This is where to define SMAs that occur before and after a barcode scan (or other data packet from the input device, e.g. a scale, or RFID scanner). To add, edit, or remove an SMA entry use the buttons at the bottom of the dialog. The default SMA sends the ENTER key after each scan.

Example: Run Excel Macro

To run an Excel Macro instruct SerialMagic to send the excel macro key sequence before each scan. For example to use Option+Command+Shift+R to run a macro assigned to Excel using the same sequence. Click “Add”, then for “Select Action:” choose Keystroke, and for key choose R as shown below (SerialMagic dialog on left, Excel dialog on right).



SMAP Pattern Actions Dialog



Pattern

Define a desired data pattern(s) to match in this list. For example if you want SerialMagic to perform certain actions, but only when the is a particular length, us the Length SMA.

Notes for LaserChamp and Flic Bluetooth Scanners

When using the Bluetooth scanner in batch mode the scanner may have scans in memory when the SerialMagic "Start" button is clicked. In this case, when the scanner Bluetooth radio is active (scanner LED is blinking) scans may be lost if the target application field (where the data is desired), is not selected quickly enough after clicking the "Start" button. This is only a concern when a target application is not selected. When a target application is selected SerialMagic will auto-focus to the target application.

The "Scans:" label is updated if scans may not properly be input to the target application, so this can be used to check the number of scans received against those in the target application should there be a case where lost scans is a question.

It may take up to 35 seconds for the "Disconnected" label in SerialMagic to reflect a lost connection with the scanner.

It may take up to 15 seconds for the "Connected" label in SerialMagic to reflect a re-connection with the scanner after it has disconnected.

TruePair™ Security Pairing (only applies to LaserChamp & Flic scanners)

The "TruePair Security Lock" and "TruePair Security Unlock" options from the Tools Menu allow strong pairing of LaserChamp Wireless Bluetooth barcode scanner to a Mac using TruePair™ Security technology. This option can be used in an environment where Bluetooth Access Points that support the Bluetooth SerialPort Profile (Spp) are present. Some Bluetooth Access Points like the Serialio.com BtSnap (Bluetooth Serial Network Access Point) can be configured to auto-connect with LaserChamp wireless scanner. When this occurs, the pairing with the Mac device is broken; this requires the Bluetooth scanner to be re-paired with the Mac. SerialMagic Pro uses TruePair™ technology to prevent 'broken trust' by 'locking' the scanner to the Mac. Note: once a Bluetooth LaserChamp is 'locked' it must be unlocked using the same Mac, or the scanner must be reset to remove the lock. The LaserChamp

The fine print

SerialMagic allows you to capture data from a serial port and transfer the data as keystrokes into virtually any application. Once the program is setup, data will be 'magically' transferred from the specified input device to the selected application.

The first time you run SerialMagic, you will need to select an application to accept the keystrokes, and a serial port to receive the data. Once these selections are made, SerialMagic will save your preferences and restore them every time you start the software.

The application choices will consist of the currently running applications. If an application is designed to run in the background, it will not be available in the pop-up menu. In general, if any application is shown to be running in the Dock, it will be available to SerialMagic. One exception is that keystrokes cannot be sent directly to the Finder.

Keep in mind that the application you choose must be running at the time you start SerialMagic. If you wish to send keystrokes to an application, and the application is not running when you start SerialMagic, you will need to quit SerialMagic, start the application and then restart SerialMagic.

The serial port choices will consist of the currently available serial ports on your computer. If you are using a plug-in USB to serial adapter, the pop-up choices will include those serial ports.

Please note that any serial port that you wish to use must be plugged in **before** you start SerialMagic. If the adapter is not plugged in when you start SerialMagic, you will need to quit SerialMagic, plug in the adapter, and then restart SerialMagic.

After you select a serial port, the port configuration settings will be displayed below the port name. If you wish to change the port settings, make your changes in the dialog box that appears when you click on the "Change" button. The settings you select will be saved and used whenever you run SerialMagic.

Any changes to the settings must be made before you open the serial port. If the serial port is open, and you want to change the target application for example, you must close the serial port, make your change, and then reopen the serial port.

After these setups have been made, clicking on the "Open" button will open the serial port and any subsequent data will be sent to the selected application.

Because the serial port data is sent to your application as keystrokes, your application will **only** receive that data when that application is the one receiving keystrokes. In particular, if you open the serial port from SerialMagic, and do not switch over to your target application, the data from the serial port will **not** go to your application.

Any keystrokes that do not make it to your application will be lost. However, by default, SerialMagic will display the data received by the serial port. From this received serial port data, you can copy any lost keystrokes.

This version of SerialMagic will only transfer the standard ASCII character set as keystrokes. If you need to transfer characters with ASCII values above 127 (hexadecimal 7F) please contact Serialio.com.

Running SerialMagic from a Managed User Account

-Go to OS X Applications folder

-Select File >> New Folder and name the new folder "SerialMagic Pro"

-Select the "SerialMagic Pro" folder, select File >> Info, this will display the info dialog

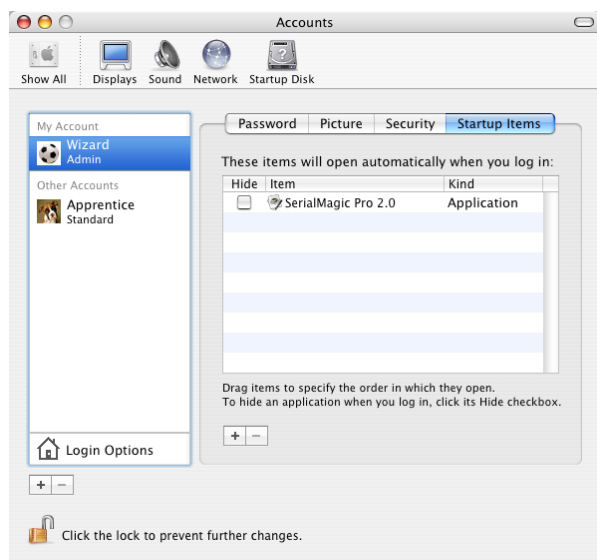
-From the info dialog, click the "Details" and set the "Others" field to allow "Read & Write" (or configure according to your local security policy ... the point is the "Managed User Account" must have permission to write this folder since this is where SerialMagic saves its settings)

-Copy the "SerialMagic Pro x.x.x" app from the DMG mount to the newly created "SerialMagic Pro" folder in the Applications folder.

-Go to System Preferences >> Accounts >> and select the Managed User account. (Note: if using OS X Fast User Switching feature the Managed User must be logged out before it can be selected)

-In the "This user can only use these applications:" area, click the "Allow" checkbox next to "SerialMagic Pro x.x.x" in the "Applications" area.
Auto-Start SerialMagic on OS X Startup

If you want to have SerialMagic launch automatically when OS X starts, then add SerialMagic to System Preferences... >> System : Accounts >> Startup Items as shown below



Contact US

If you have questions or comments please contact us.

Serialio.com

support@serialio.com