

Overview: You want to configure your LaserChamp scanner to work with SerialMagic Software using Microsoft Terminal Services(tm).

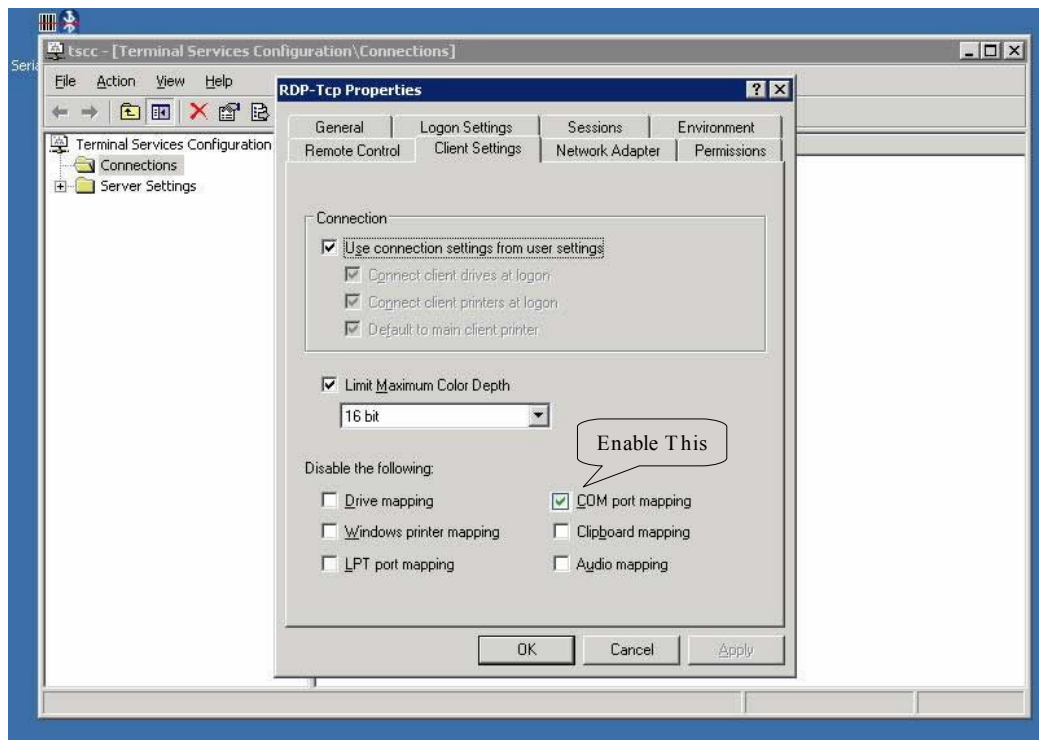
You have a LaserChamp scanner attached to a PC (running WinXP sp2) and you want to send scans to another computer running SerialMagic. The other computer can be either Windows Server 2003 or Windows XP sp2.

The steps are as follows:

Verify that your scanner setup is functioning properly (communicating via local cable/tether or Bluetooth connection) on your computer. We recommend that you first setup SerialMagic on a local PC and verify it communicates properly with your LaserChamp.

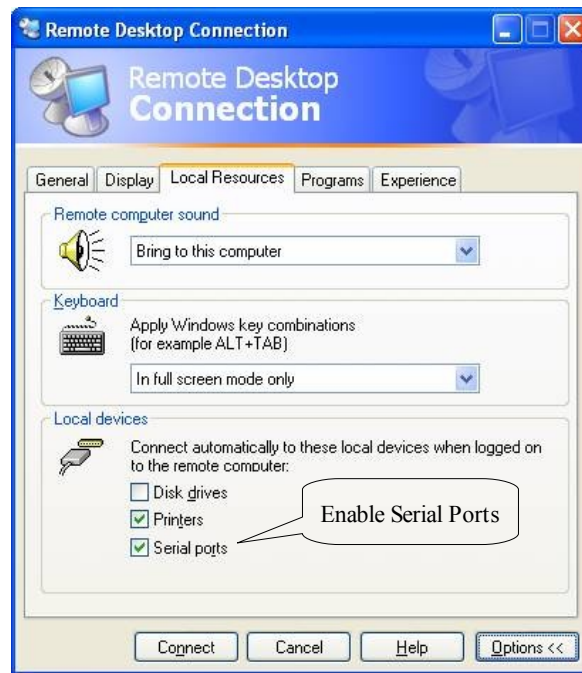
After verifying communication, note the COM port used on this computer (COM1, COM2, etc...). You can now install SerialMagic on the Terminal Services PC. **IMPORTANT NOTE:** If the LaserChamp is connected via a Windows XP BlueTooth dongle/adaptor, then the COM port to note is the OUTBOUND port. This note does NOT apply to the BlueSnap BlueTooth adaptor.

If running Terminal services on Windows Server 2003, under Terminal Server configuration, make sure the 'com port mapping' is enabled.



On WinXP computer that has the scanner installed, run Microsoft Remote Desktop Connection. (Usually located START > All Programs > Accessories > Communications).

Before attempting to connect to Terminal Services, you'll need to enable "Serial Ports" on this PC. This setting is located under the Options button.



Then connect to Terminal Services as normal.

You will need to configure SerialMagic on the Terminal Services PC to see the COM port on the Remote Desktop Connection.

After connecting through Terminal Services, launch SerialMagic then click the STOP button. (SerialMagic normally starts when it is launched unless there is an error). At this point, you can configure it to support your LaserChamp on the COM port that was noted on the Remote Desktop PC.

You can now START SerialMagic. Your scans on the Remote Desktop should now be received by the SerialMagic software on the Terminal Services PC.

Some Important Notes:

SerialMagic on the Terminal Services PC should be configured for either 1) Tethered mode (or cable connected), if you are NOT using the BlueSnap Bluetooth adapter for your LaserChamp, otherwise 2) BlueSnap RS-232 or CSR. Please note that when using a BlueSnap in a Terminal Services configuration, you should NOT choose the BlueSnap USB type of connection.

When configuring SerialMagic on the Terminal Services PC, there may already be a COM port assigned the same as the COM port being forwarded by the Remote Desktop. (e.g. A COM3 on Terminal Services PC and a COM3 on Remote Desktop for the scanner.) In this case, COM3 will show up twice in SerialMagic. Choose the first COM3 connection and verify. If scans are not received by SerialMagic, choose the second port. This port duplication issue may be addressed in a future version of SerialMagic.