









Application Note

How do I scan ISBN's?

SerialMagic Professional provides the ability to extract the ISBN number from book barcodes, specifically "Bookland EAN-13" barcodes. To properly receive ISBN numbers from scanning barcodes of books, you must configure BOTH the LaserChamp scanner, and enable the appropriate setting on SerialMagic Pro software.

First, you will need to configure your scanner for scanning ISBN's. You will have to scan a series of control barcodes, provided below. Note: These codes can also be found on the LaserChamp control codes sheet, and the LaserChamp symbology control codes sheet, located on our website at on the LaserChamp Support page:

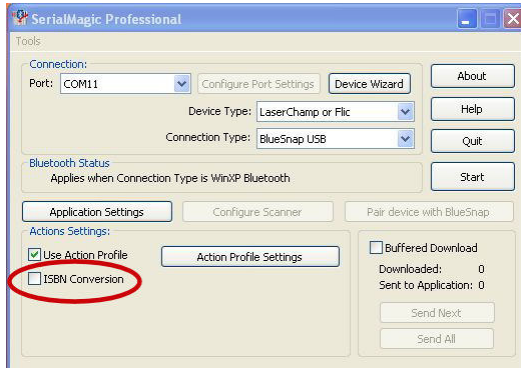
<http://serialio.com/support/LaserChamp/index.php>

<p>If you are using a LaserChamp I barcode scanner, scan the following codes:</p>  <p>CLEAR SCAN MEMORY</p>  <p>FACTORY DEFAULTS</p>  <p>AIM IDENTIFIERS ENABLE</p>  <p>DISABLE SUPPLEMENTAL CODES</p> <p>Scanner configuration is now complete.</p>	<p>If you are using a LaserChamp II barcode scanner, scan the following codes:</p>  <p>Clear Scanner Memory</p>  <p>Factory Defaults</p>  <p>AIM Identifiers Enable</p>  <p>Disable Supplemental Codes</p> <p>Scanner configuration is now complete.</p>
---	--

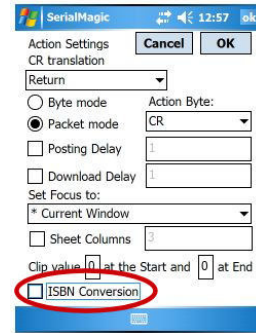
2) The next step is to enable ISBN Conversion on SerialMagic Pro. Simply check the box next to the ISBN Conversion option on SerialMagic Pro. If you cannot locate this option, please see the documentation on the next page for SerialMagic Pro screenshots specific to your platform.

Locating “ISBN Conversion” on SerialMagic Pro
The following screenshots will display the location of the “ISBN Conversion” checkbox on SerialMagic Pro, across the various platforms.

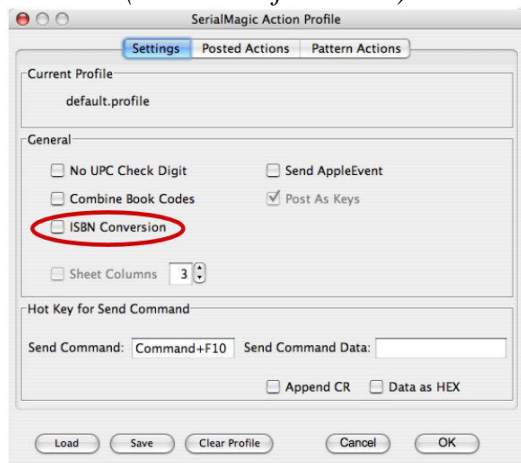
Windows



Windows Mobile (Action Settings Menu)



Mac OSX (Action Profile Menu)



BlackBerry (Action Options List)



Palm OS (SerialMagic Actions Menu)

